



GAT MONTHLY MEMBERSHIP PROGRESS REPORT

Results as of: 4/30/2023

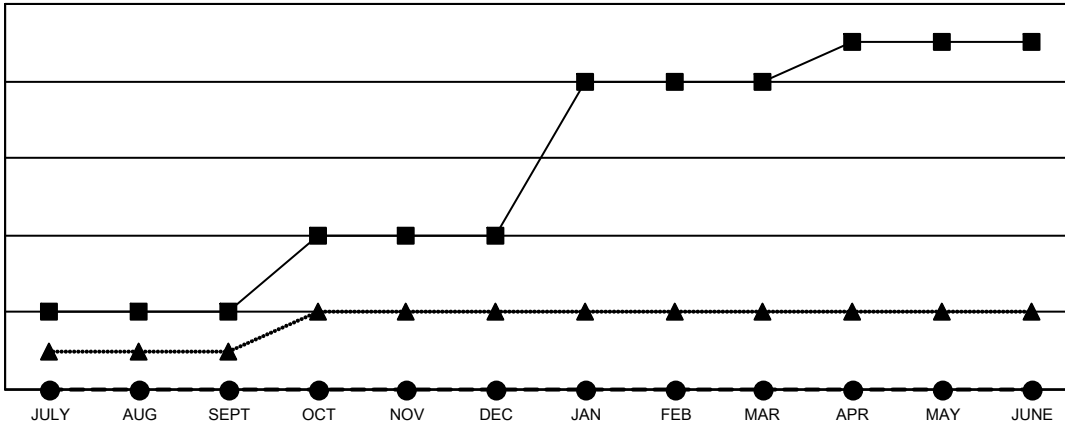
Multiple District 9

LOCATION: IOWA

Clubs			
RESULTS FOR 2022-2023			
QUARTER	NEW CLUB GOAL	NEW CLUBS	DROPPED CLUBS
JULY/AUG/SEPT	2	0	0
OCT/NOV/DEC	2	0	0
JAN/FEB/MAR	4	0	3
APR/MAY/JUNE	1	0	0

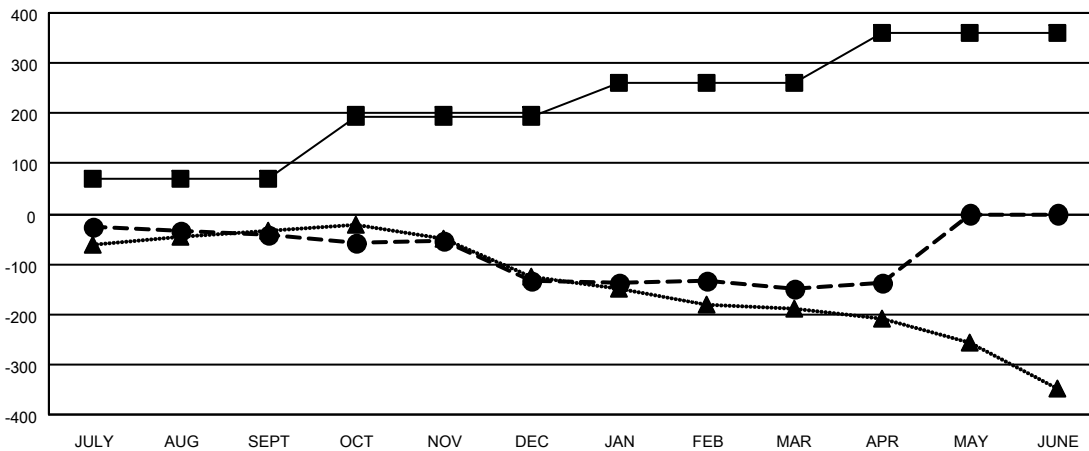
Members			
RESULTS FOR 2022-2023			
QUARTER	MEMBER GROWTH NET GOAL	MEMBER GROWTH ACTUAL	DROPPED MEMBERS ACTUAL (including transfers)
JULY/AUG/SEPT	70	141	169
OCT/NOV/DEC	125	134	214
JAN/FEB/MAR	65	161	151
APR/MAY/JUNE	100	61	46

GOALS AND ACTUAL NEW CLUBS CUMULATIVE



- CURRENT YEAR GOALS FOR NEW CLUBS
- CURRENT YEAR ACTUAL NEW CLUBS
- ▲- LAST YEAR ACTUAL NEW CLUBS

GOALS AND ACTUAL MEMBERS CUMULATIVE



- MEMBER GROWTH NET GOAL
- MEMBER GROWTH ACTUAL
- ▲- LAST YEAR MEMBERSHIP ACTUAL

DROPPED CLUBS: 3	143 CLUBS OF 284 ADDED 1 OR MORE NEW MEMBERS	GENDER DISTRIBUTION
DROPPED MEMBERS	CLICK HERE FOR CUMULATIVE MEMBERSHIP DATA	MALE 4,817 (71.49%)
DECEASED 103		FEMALE 1,919 (28.48%)
CLUB CANCELLED 0		NON BINARY 1 (0.01%)
OTHER 477		PREFER NOT TO ANSWER 1 (0.01%)
TOTAL 580		TOTAL FAMILY UNIT MEMBERS 1,476
		FAMILY MEMBERS PAYING HALF DUES 751